

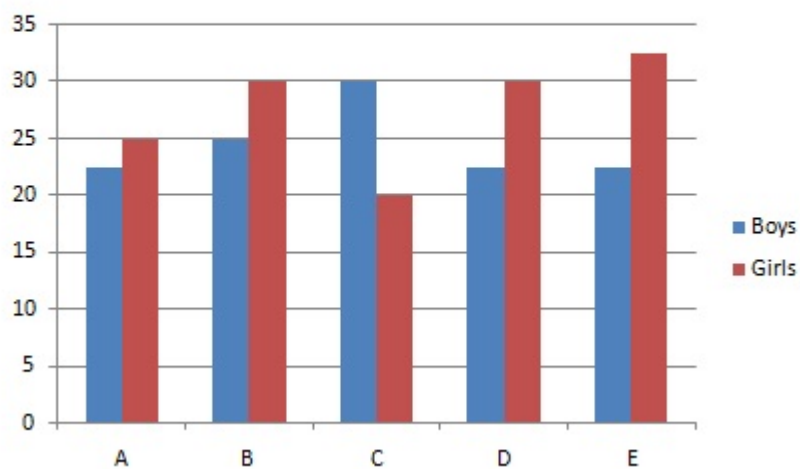
APTITUDE - BAR CHARTS

Advertisements

A bar chart or bar graph is a type of chart to represent Grouped data with rectangular bars where lengths of rectangles/bars are proportional to the values that they represent. The bars can be plotted/drawn vertically or horizontally. A vertical bar chart is also called a column bar chart.

A bar graph uses either horizontal or vertical bars. It is used to show comparisons among categories. One axis of the chart shows the specific categories which are to be compared, and the other axis represents a discrete data set.

Total Number of Boys and Girls in Various Colleges Number in Thousands



For example, using the above bar chart, you want to check the difference between total number of girls and boys in all colleges together?

Total number of boys = $(22.5+25+30+22.5+22.5)$ thousands = $(122.5*1000)$ = 122500
Total number of girls = $(25+30+20+30+32.5)$ thousand = $137.5*1000$ = 137500.
 \therefore Required difference = $(137500-122500)$ = 15000

Solved Examples

[Solved Examples](#)