



# SAP

# Webi

**tutorialspoint**

SIMPLY EASY LEARNING

[www.tutorialspoint.com](http://www.tutorialspoint.com)



<https://www.facebook.com/tutorialspointindia>



<https://twitter.com/tutorialspoint>

## About the Tutorial

---

Web Intelligence, the business intelligence reporting tool, is a part of SAP BusinessObjects product suite. This is a handy tool for business users for analytical and ad hoc reporting.

Using Web Intelligence, business users can create basic, medium, and complex reports from transactional data in database to meet business requirements. This tutorial explains the key concepts of SAP Web Intelligence (SAP Webi).

## Audience

---

This tutorial is designed for all those readers who want to learn the basics of SAP Web Intelligence and implement it to analyze data with the help of BI Launchpad and Webi.

## Prerequisites

---

You need to have the required skills to unearth relevant data and analyze it in order to create professional reports.

## Disclaimer & Copyright

---

© Copyright 2018 by Tutorials Point (I) Pvt. Ltd.

All the content and graphics published in this e-book are the property of Tutorials Point (I) Pvt. Ltd. The user of this e-book is prohibited to reuse, retain, copy, distribute or republish any contents or a part of contents of this e-book in any manner without written consent of the publisher.

We strive to update the contents of our website and tutorials as timely and as precisely as possible, however, the contents may contain inaccuracies or errors. Tutorials Point (I) Pvt. Ltd. provides no guarantee regarding the accuracy, timeliness or completeness of our website or its contents including this tutorial. If you discover any errors on our website or in this tutorial, please notify us at [contact@tutorialspoint.com](mailto:contact@tutorialspoint.com).

## Table of Contents

---

<b>About the Tutorial</b> .....	i
<b>Audience</b> .....	i
<b>Prerequisites</b> .....	i
<b>Disclaimer &amp; Copyright</b> .....	i
<b>Table of Contents</b> .....	ii
<b>1. SAP WEBI – OVERVIEW</b> .....	<b>1</b>
<b>Versions and History</b> .....	<b>1</b>
<b>Web Intelligence Architecture</b> .....	<b>1</b>
<b>2. SAP WEBI – BI LAUNCHPAD</b> .....	<b>3</b>
<b>3. SAP WEBI – BI PREFERENCES</b> .....	<b>6</b>
<b>4. SAP WEBI – APPLICATION MODES</b> .....	<b>8</b>
<b>Data Application Mode</b> .....	<b>8</b>
<b>Reading Mode</b> .....	<b>8</b>
<b>Design Mode</b> .....	<b>9</b>
<b>5. SAP WEBI – CREATING DOCUMENTS</b> .....	<b>11</b>
<b>Creating Documents in Webi</b> .....	<b>11</b>
<b>Creating Document Based on Universe</b> .....	<b>12</b>
<b>Creating Document based on BEx</b> .....	<b>14</b>
<b>Creating Document Based on Analysis View</b> .....	<b>16</b>
<b>6. SAP WEBI – EDITING &amp; OPENING DOCUMENTS</b> .....	<b>17</b>
<b>7. WEB INTELLIGENCE – SENDING DOCUMENTS</b> .....	<b>20</b>
<b>Sending a Document via E-mail</b> .....	<b>20</b>
<b>Sending Documents to Other Users</b> .....	<b>21</b>

<b>Sending Documents Using FTP .....</b>	<b>21</b>
<b>8. SAP WEBI – MANAGING REPORTS .....</b>	<b>22</b>
<b>9. SAP WEBI – USING QUERIES .....</b>	<b>25</b>
<b>Query Definition .....</b>	<b>25</b>
<b>Query and Documents User Rights .....</b>	<b>27</b>
<b>10. SAP WEBI – QUERIES USING UNIVERSE .....</b>	<b>29</b>
<b>11. SAP WEBI – QUERIES USING BEX .....</b>	<b>33</b>
<b>How to Enable Access to BEx Query? .....</b>	<b>34</b>
<b>How to Use BEx as Data Source in Webi Rich Client?.....</b>	<b>35</b>
<b>12. SAP WEBI – QUERIES USING ANALYSIS VIEW .....</b>	<b>38</b>
<b>13. SAP WEBI – QUERY FILTERS .....</b>	<b>40</b>
<b>14. SAP WEBI – QUERY FILTER TYPES .....</b>	<b>42</b>
<b>Predefined Query Filters .....</b>	<b>42</b>
<b>Quick Filters .....</b>	<b>43</b>
<b>Custom Query Filters.....</b>	<b>44</b>
<b>Prompts .....</b>	<b>45</b>
<b>Combining Prompts with Query Filter .....</b>	<b>49</b>
<b>15. SAP WEBI – RANKING DATA.....</b>	<b>54</b>
<b>16. SAP WEBI – WORKING WITH REPORTS .....</b>	<b>55</b>
<b>Organizing Data with Sections, Breaks, Sorts .....</b>	<b>56</b>
<b>Creating a Section from a Column .....</b>	<b>57</b>
<b>Creating a Section from a Dimension .....</b>	<b>57</b>
<b>Creating Sections from Hierarchy .....</b>	<b>58</b>

<b>Removing or Hiding a Section</b> .....	<b>59</b>
<b>17. SAP WEBI – BREAKS</b> .....	<b>61</b>
<b>How to Insert a Break?</b> .....	<b>61</b>
<b>Manage Breaks</b> .....	<b>62</b>
<b>18. SAP WEBI – SORTS</b> .....	<b>63</b>
<b>How to Insert a Sort?</b> .....	<b>63</b>
<b>19. SAP WEBI – CHARTS</b> .....	<b>65</b>
<b>Bar Charts</b> .....	<b>65</b>
<b>Box Plot Charts</b> .....	<b>65</b>
<b>Column Charts</b> .....	<b>66</b>
<b>Line Charts</b> .....	<b>67</b>
<b>Map Charts</b> .....	<b>67</b>
<b>Pie Charts</b> .....	<b>68</b>
<b>Point Charts</b> .....	<b>68</b>
<b>Radar Chart</b> .....	<b>69</b>
<b>Tag Cloud</b> .....	<b>70</b>
<b>Waterfall</b> .....	<b>70</b>
<b>Add a Chart to Report</b> .....	<b>71</b>
<b>Copy Chart</b> .....	<b>73</b>
<b>Delete a Chart</b> .....	<b>74</b>
<b>Changing a Chart Type</b> .....	<b>74</b>
<b>Resize Charts</b> .....	<b>75</b>
<b>Formatting a Chart</b> .....	<b>76</b>
<b>20. SAP WEBI – CONDITIONAL FORMATTING</b> .....	<b>78</b>
<b>Creating a Conditional Formatting Formula</b> .....	<b>78</b>

<b>Manage Conditional Formatting Rules .....</b>	<b>80</b>
<b>21. SAP WEBI – FILTERING REPORT DATA.....</b>	<b>82</b>
<b>Report Filter Operators .....</b>	<b>82</b>
<b>Types of Report Filters .....</b>	<b>83</b>
<b>Create, Edit, Delete Standard Report Filters .....</b>	<b>83</b>
<b>22. SAP WEBI – INPUT CONTROLS .....</b>	<b>85</b>
<b>Defining Input Controls in Webi .....</b>	<b>85</b>
<b>Edit an Input Control .....</b>	<b>87</b>
<b>Organize Input Controls .....</b>	<b>88</b>
<b>View Input Controls Map .....</b>	<b>89</b>
<b>Define Table and Charts as Input Controls.....</b>	<b>89</b>
<b>23. SAP WEBI – FORMULAS AND VARIABLES .....</b>	<b>91</b>
<b>How to Enter a Formula?.....</b>	<b>91</b>
<b>How to Create a Variable?.....</b>	<b>91</b>
<b>24. SAP WEBI – DRILL OPTIONS IN REPORTS.....</b>	<b>94</b>
<b>Setting Drill Option .....</b>	<b>94</b>
<b>25. SAP WEBI – SHARING REPORTS .....</b>	<b>96</b>
<b>Publishing as Web Services .....</b>	<b>96</b>
<b>Publishing Prompts .....</b>	<b>96</b>
<b>Defining Web Services.....</b>	<b>96</b>
<b>26. SAP WEBI – MERGE DIMENSION .....</b>	<b>98</b>

# 1. SAP Webi – Overview

Web Intelligence is part of SAP BusinessObjects product suite and is used for analytical and ad hoc reporting to meet an organization's business requirements. Web Intelligence is a Business Intelligence reporting tool for business users to analyze data in Data Warehouse. It assists business managers in the decision-making process for building future strategies.

Using Web Intelligence, business users can create basic, medium, and complex reports from transactional data in database and by creating Universes using Information Design Tool/UDT. Various SAP and non-SAP data sources can be used to create reports in Web Intelligence. SAP Business Warehouse (BW) system doesn't require a Universe to connect to Web Intelligence tool.

Web Intelligence tool can work as a client tool of BusinessObjects platform and also as a standalone tool for reporting.

## Versions and History

---

BusinessObjects was first started in 1990 with the tool name Skipper SQL 2.x, and in the year 1994 Business Objects v3.0 was launched.

In 2005, BO XI was released and later on various other versions introduced. Some of the versions are:

- BO XI R1
- BO XI R2
- BO XI R3
- BO XI R3.1
- BO XI R3.2

In 2007, SAP acquired this company for \$6.8 billion and the product has been renamed as **SAP BusinessObjects**.

Later in the year 2011, BO XI 4.0 was introduced. The latest version of the tool is SAP BO 4.2.

## Web Intelligence Architecture

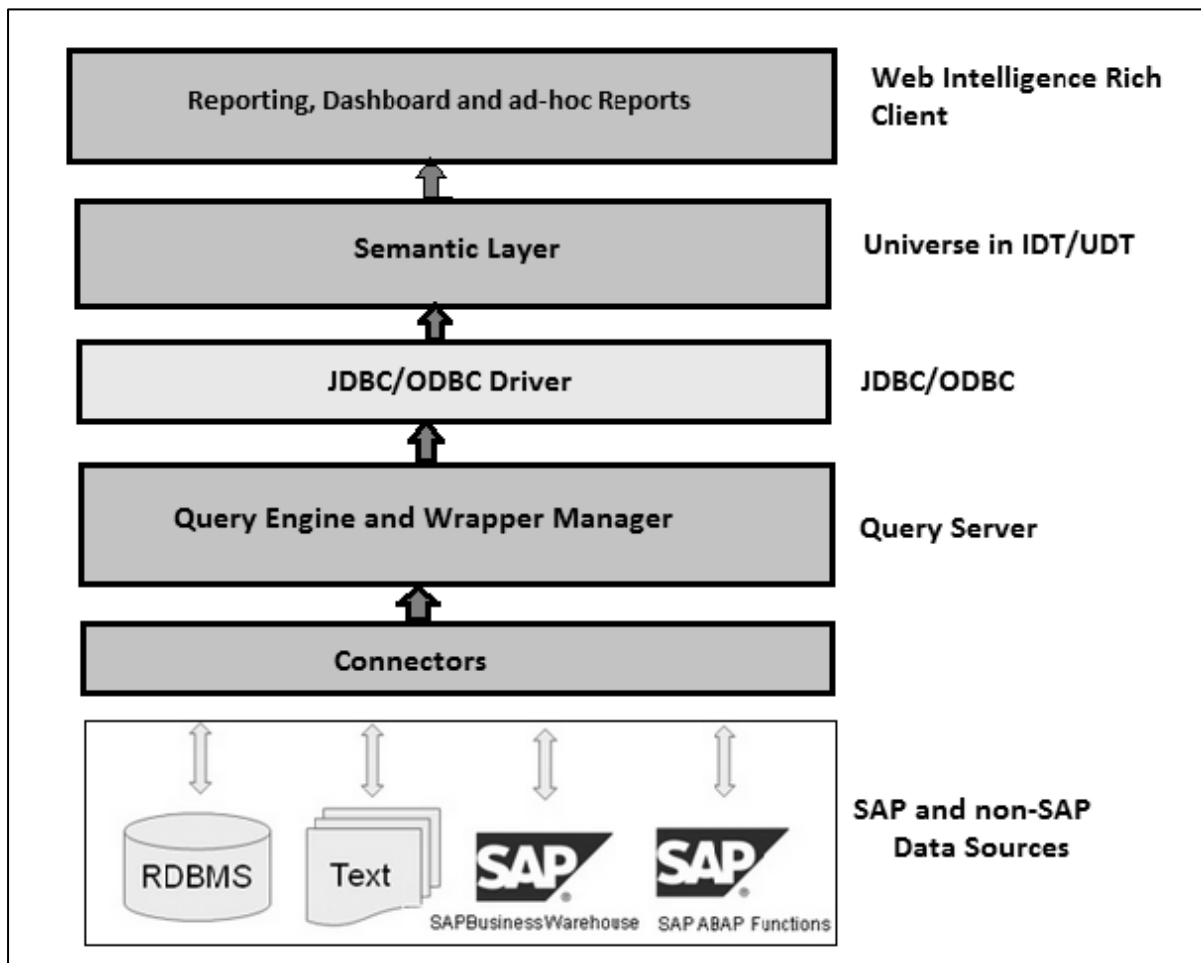
---

SAP Webi has a three-layered architecture:

- **Database Layer** – This layer defines multiple SAP and non-SAP data sources.
- **Semantic Layer** – This layer defines multidimensional data model.
- **Presentation Layer** – This layer defines where data is presented to end-users.

Various data sources can be used to create analytical and ad hoc reports. You can pull data from SAP systems, like SAP ECC, SAP ERP, SAP SRM, and other SAP modules.

Non-SAP data sources include Oracle Database, Microsoft SQL Server, IBM DB2, and Sybase.





## 2. SAP Webi – BI Launchpad

BI Launchpad is a Java or HTML based interface of BusinessObjects tool to perform analytical reporting and data analysis. You can set the preference for your BI Launchpad that determines which tool interface is launched via Launchpad.

Using Web or Internet Application to access Webi interface via BI Launchpad, you can perform the following tasks:

- Create, edit and refresh all the reports in Web Intelligence.
- Create and edit all the queries in no data source (Universes) but not BEx queries in Web application.

**Note:** If you are using Webi 4.0 SP2, it is not possible to create queries and you can only work on documents and reports.

BI Launchpad has the following important tabs:

- Home – Displays recent messages, alerts, documents, and applications that can be run.
- Documents – Displays the available documents and folders, making it easier to view, organize, and manage the documents.
- Any open Document – Displays each open document.

You can use the Application tab to start an application including Web Intelligence. You can use the Preference tab to define BI Launchpad preferences.

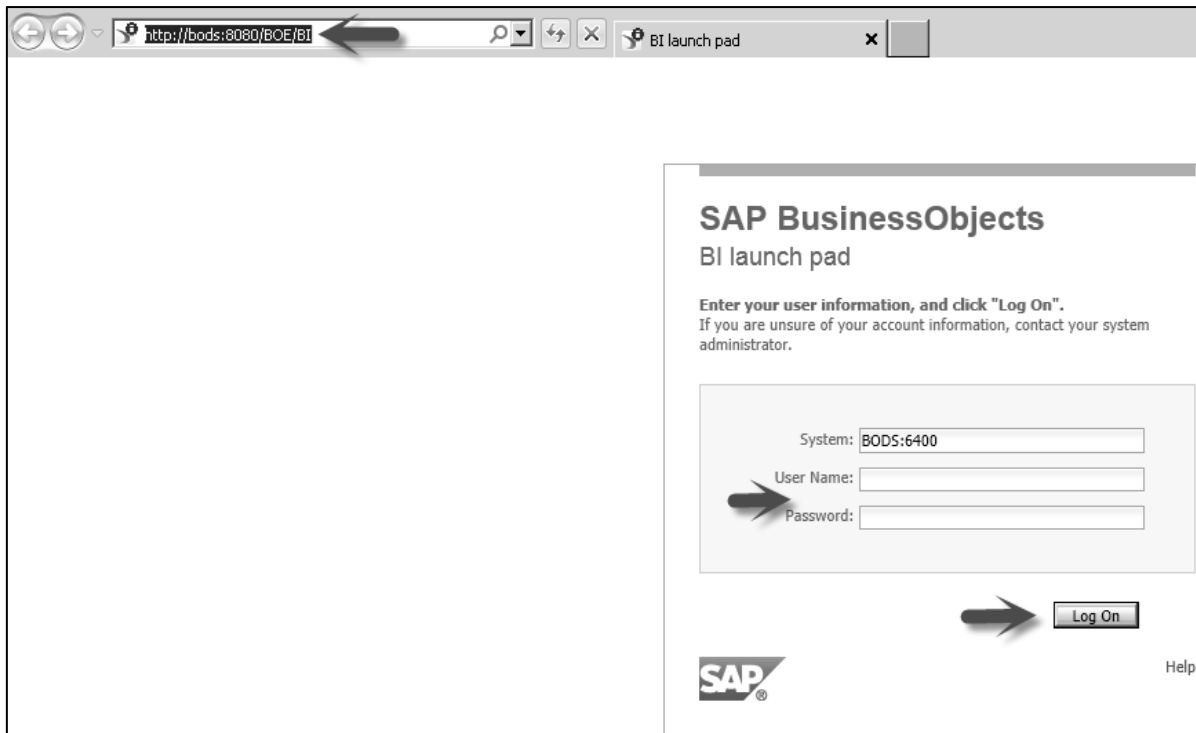
### Logging to BI Launchpad

As mentioned, BI Launchpad is HTML5 or Java-based web interface to launch an application via BI Launchpad.

To access BI Launchpad, you should have a web URL, user name and password. Access profile to be set for the resources.

To get the BI Launchpad details and user credentials you can reach the BO Administrator using the link, <http://BOSERVER:8080/BOE/BI>

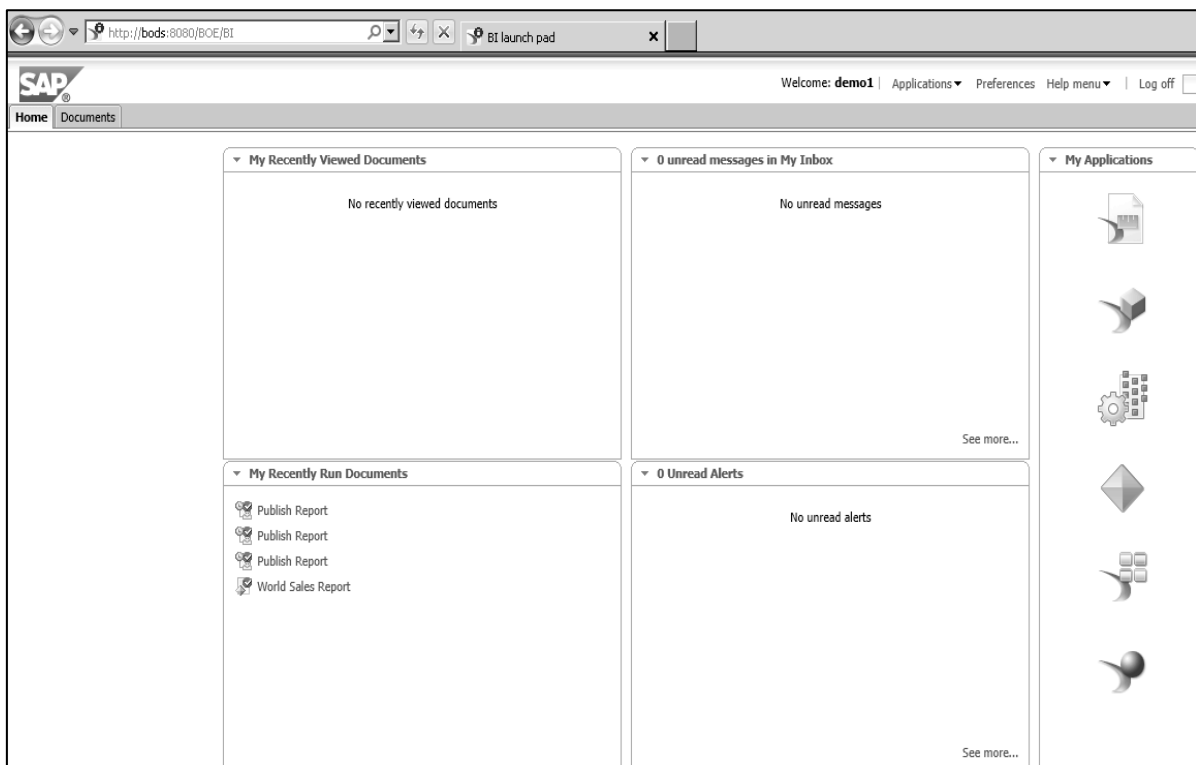
To login to BI Launchpad, open the web browser and enter the Launchpad URL provided by your administrator. The following screen pops up.



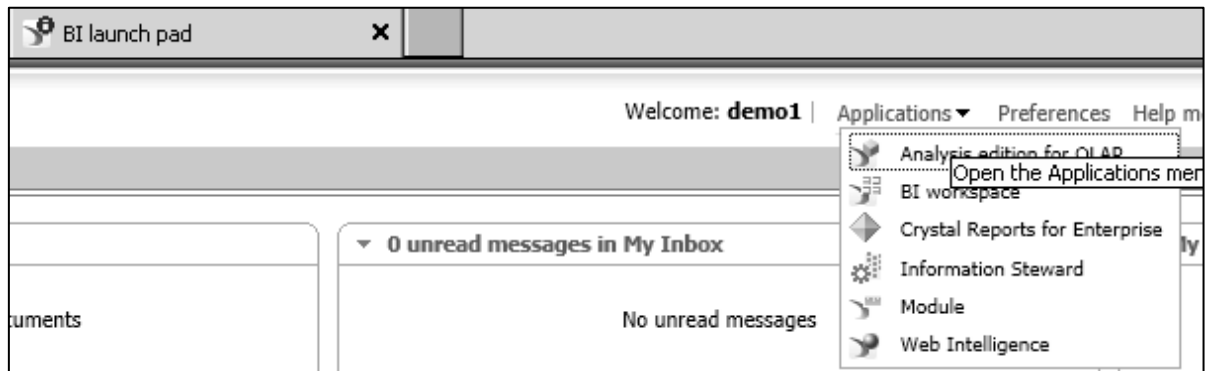
Select the system name you want to login. Enter the user name and password.

In the Authentication dropdown, select the Authentication type - Enterprise, Windows AD, etc. (In the above snapshot, this server has a single login).

Click 'Log On' and it will open the home page for BI Launchpad.



You can use Applications tab of Launchpad to run any of the application.

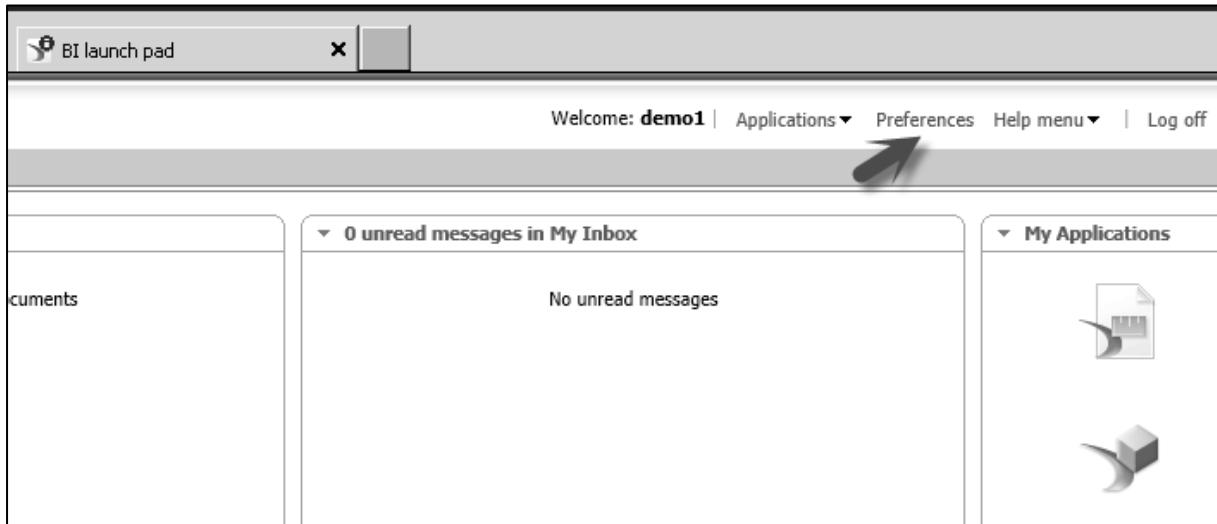


# 3. SAP Webi – BI Preferences

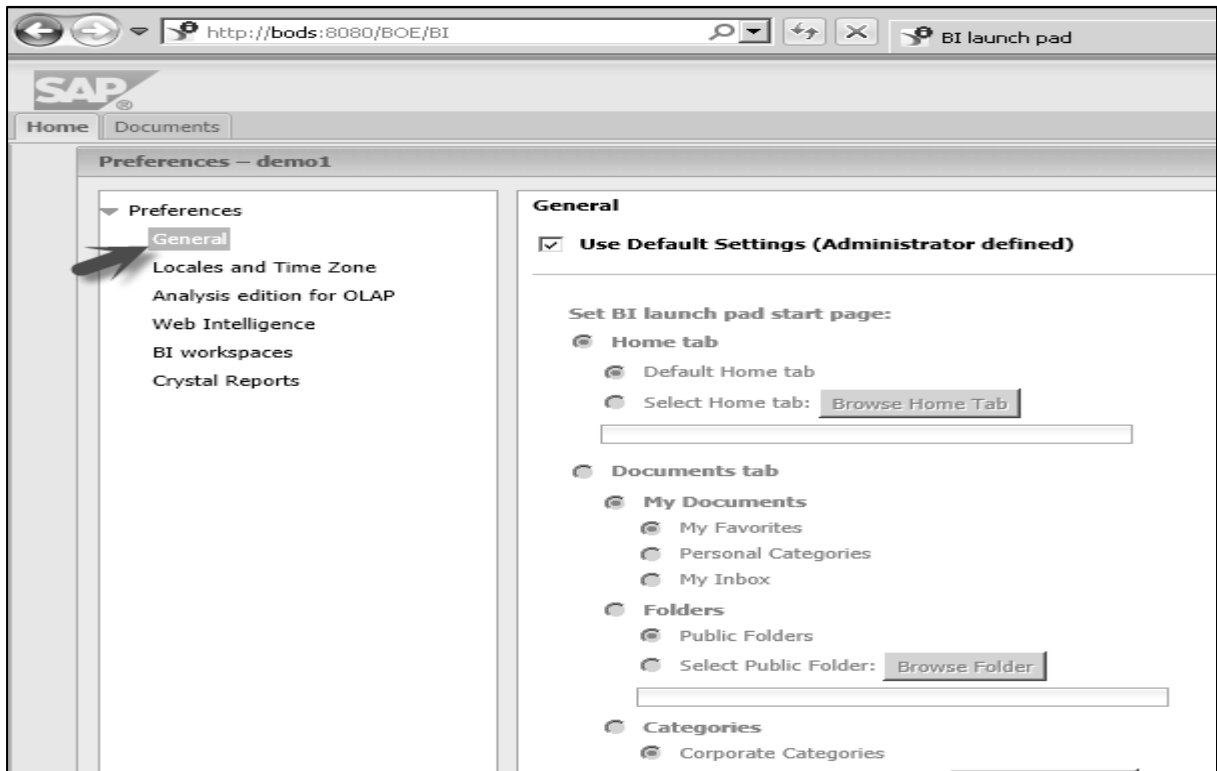
Let us now discuss how to set BI preferences.

## Setting BI Preferences

You can set BI Launchpad preferences for the following tasks.



**General Preferences:** These are defined by the administrator. You can reset your password. You can also set time zone, locales preferences, and Web Intelligence preferences.



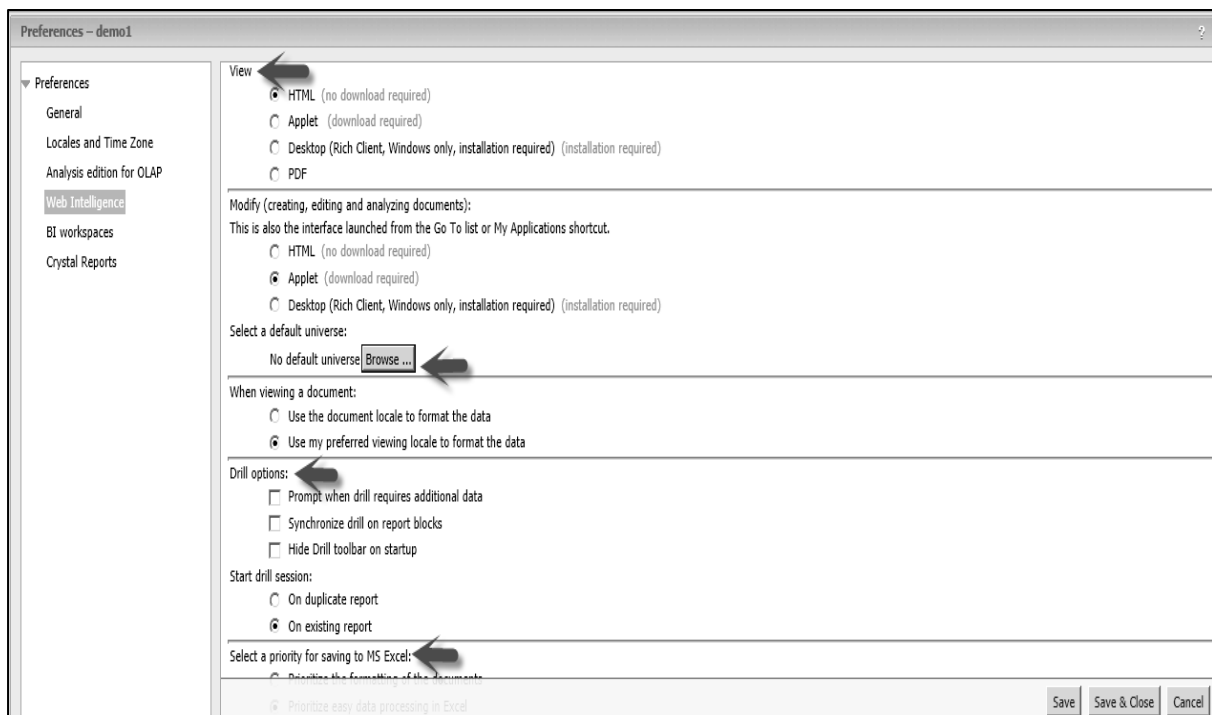
**General Tab:** Using this tab you can set user default settings.

**Change Password:** As per your user access.

**Locales and Time Zone:** To set product locale, preferred viewing locale, current time zone.

**Analysis Edition for OLAP:** To define accessibility mode.

**Web Intelligence:** You can select the interfaces to use for view and modify modes. You can also select a Default Universe. You can set the drill options. You can also select saving priorities when saving a report in .xls format.



**BI Workspaces:** Used to select a default stylesheet to use when creating a new workspace.

**Crystal Reports:** Used to set crystal reports options like printing options, default measuring unit, etc.

# 4. SAP Webi – Application Modes

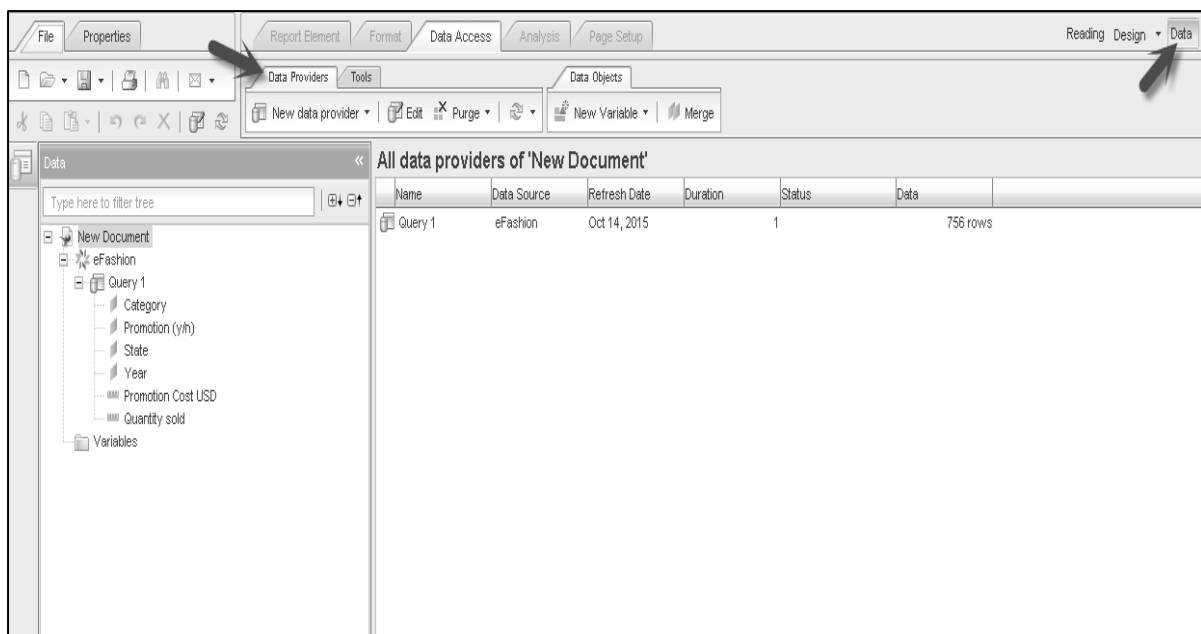
There are three different application modes that can be used to build the queries, create documents and to analyze the reports. When you open an existing report, the following modes are available:

- Data
- Reading
- Design

## Data Application Mode

In this mode, you can create new data provider, change an existing data source or rename a data provider. You can also create, edit, and manage queries, which is used to pass data to reports.

In Data mode, it shows the list of all the available data providers. All the options in tool mode are disabled in this mode.



## Reading Mode

This mode allows you to display existing reports, search text, monitor changes in the reports, and drill down on the data in the report.

You can also use the left panel and tool bar in the Reading mode.

Web Intelligence Rich Client - [DEMO1 - @BOD5.LOGON2ERP.COM#6400 Connected] - New Document \*

Web Intelligence - [Track] [Drill] [Filter Bar] [Freeze] [Outline] [Reading] [Design] [Data]

Input Controls - Map Reset

There are no input controls defined in this report. To define a new one, switch to Design mode.

### Report 1

Year	Category	Promotion C	Promotion (y)
2005	2 Pocket shirt	\$12,650	y
2005	Evening wear	\$13,000	y
2005	Jewelry	\$9,500	y
2005	Long sleeve	\$8,050	y
2005	Short sleeve	\$10,700	y
2005	T-Shirts	\$7,075	y

Year	Category	Quantity sold	State
2004	2 Pocket shirt	283	California
2004	2 Pocket shirt	46	Colorado
2004	2 Pocket shirt	102	DC
2004	2 Pocket shirt	67	Florida
2004	2 Pocket shirt	105	Illinois
2004	2 Pocket shirt	56	Massachusetts
2004	2 Pocket shirt	236	New York

## Design Mode

Design mode allows you to add, delete objects in a report, applying conditional formatting, applying formulas in report, creating variables, etc.

Design mode with Structure only allows you to view the structure of the report. All the changes that you make in this mode, they are not applied to the server till you populate it with data.

Format Data Access Analysis Page Setup Reading Design Data

Data Objects

Edit Purge New Variable Merge

With Data Ctrl+2

Structure Only Ctrl+3

=ReportName()

0.64 cm

=NameOf([Yea=NameOf([Cat=NameOf([Pro=NameOf([Pro=NameOf([Yea=NameOf([Cat=NameOf([Qu=NameOf([Sta

= [Year] = [Category] = [Promotion C] = [Promotion (y) = [Year] = [Category] = [Quantity sold] = [State]

In Design mode with data, all the modifications applied in a report are on the server. In case you have to make a lot of changes in an existing report, it is recommended to make changes in structure mode and then populate the report with data.

6400 Connected] - New Document \*

Format | Data Access | Analysis | Page Setup | Reading | Design | Data

Data Objects

With Data  Ctrl+2  
Structure Only  Ctrl+3

Report 1

Year	Category	Promotion Cc	Promotion ty	Year	Category	Quantity sold	State
2005	2 Pocket shirt	\$12,650	y	2004	2 Pocket shirt	283	California
2005	Evening wear	\$13,000	y	2004	2 Pocket shirt	46	Colorado
2005	Jewelry	\$9,500	y	2004	2 Pocket shirt	102	DC
2005	Long sleeve	\$8,050	y	2004	2 Pocket shirt	67	Florida
2005	Short sleeve	\$10,700	y	2004	2 Pocket shirt	105	Illinois
2005	T-Shirts	\$7,075	y	2004	2 Pocket shirt	56	Massachuset



End of ebook preview

If you liked what you saw...

Buy it from our store @ <https://store.tutorialspoint.com>